



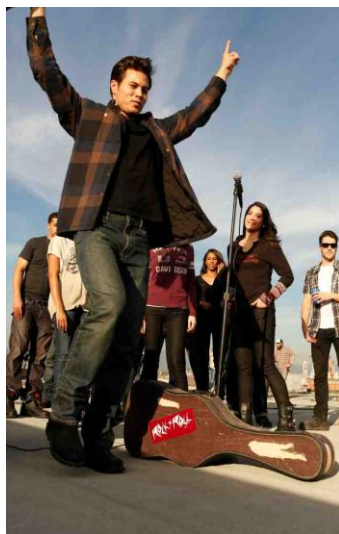
## NEVER STOP EXPLORING WITH THE HARLEY-DAVIDSON® 2014 MOTORCLOTHES® FALL COLLECTION

- Distressed fabrics and earthy colours combine with function and comfort to define the latest MotorClothes Fall Collection -

**OXFORD (August 21, 2014)** – With the summer season nearing an end, Harley-Davidson has unveiled its 2014 MotorClothes Fall Collection, designed to provide content and style for riders as they explore exciting new destinations and embark on tours of discovery despite the changing weather conditions.

Made with distressed, worn fabrics and earthy colours, the clothing combines functionality, fit and performance with aesthetics and detail that reflect the culture, spirit and origin of Harley-Davidson.

The men's Fall Collection focuses on the transitional nature of the season to make the on and off bike experience more comfortable with a combination of warmer weather features and cool weather necessities. This includes the Wicking performance feature that can be found in the **Plaid Performance Shirt** (*right*) – designed to draw moisture away from the skin, regulating the body temperature for more comfort on warm days.



Also new to the 2014 collection is the **Magnum Distressed Leather Jacket with Triple Vent System**, which has three strategically placed vents on each side of the body for increased airflow.

The stylish **Shirt Jacket** (*left*) is a key staple in the collection, created for riders and fans who embrace their individuality and strive to live life to the fullest.

The women's Fall Collection showcases eclectic details and innovative design, while staying true to the classic nature of Harley-Davidson. With a focus on unique shaping and texture accents, the **Authentic Activewear Hoodie** (*right*) displays the true essence of this collection, made of 100% cotton with vintage printed graphics and contrasting blanket-stitching on the side seams.



The **Brookhollow Soft Shell Jacket** (*below*), paired up with the **Authentic Space Dye Scoop Neck Shirt** (*below*), made with spandex fleece materials and vintage printed graphics, helps to bridge the transition from warm weather riding into the cooler season.

Sitting closer to the body to create a sleek silhouette, female riders can wear the **Ashbury RCS Mid-Layer Packable Jacket** (*right*), which has a two-way asymmetrical zipper and extended cuffs with thumbholes to help cover the hands and prevent air blowing up the sleeves.

All items can be purchased at your local Harley-Davidson dealership. For more information about the collection, visit [www.Harley-Davidson.eu/motorclothes](http://www.Harley-Davidson.eu/motorclothes).

- ENDS -



### **Notes To Editors**

#### **About Harley-Davidson Motor Company**

Harley-Davidson Motor Company produces heavyweight custom, cruiser and touring motorcycles and offers a complete line of Harley-Davidson motorcycle parts, accessories, riding gear and apparel, and general merchandise. For more information, visit Harley-Davidson's website at [www.harley-davidson.com](http://www.harley-davidson.com).

###